



COMPASS

Queens Luxury Report

May 11 - 17, 2026, Residential Contracts \$1.25M+

Photo: [22-18 Jackson Avenue, Unit 719](#)

The Queens luxury real estate market, defined as all properties priced \$1.25M and above, saw 17 contracts signed this week, made up of 3 condos, and 14 houses. The previous week saw 19 deals. For more information or data, please reach out to a Compass agent.

\$1,538,928

Average Asking Price

\$1,398,888

Median Asking Price

\$810

Average PPSF

0%

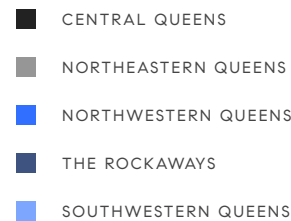
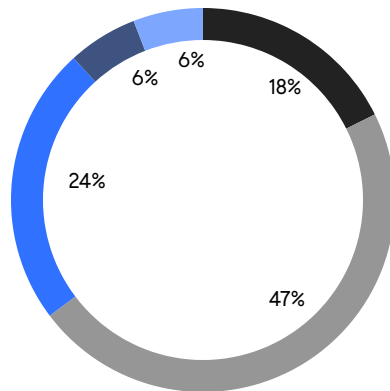
Average Discount

\$26,161,775

Total Volume

47

Average Days On Market



3

Condo Deal(s)

0

Co-op Deal(s)

14

Single-Family Deal(s)

\$1,616,667

Average Asking Price

\$0

Average Asking Price

\$1,522,270

Average Asking Price

\$1,650,000

Median Asking Price

\$0

Median Asking Price

\$1,369,000

Median Asking Price

\$1,257

Average PPSF

\$714

Average PPSF

1,288

Average SqFt

2,233

Average SqFt



108-36 67th Road

Forest Hills

Contract Signed

Type	House	Price	\$2,600,000	Sq. Ft.	2,558	Beds	4
DOM	-	Initial	\$2,600,000	PPSF	\$1,017	Baths	2



50-13 Oceania Street

Bayside

Contract Signed

Type	House	Price	\$2,480,000	Sq. Ft.	2,658	Beds	5
DOM	48	Initial	\$2,480,000	PPSF	\$934	Baths	4

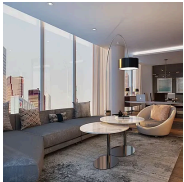


30-05 Vernon Boulevard, Unit PHA

Astoria

Contract Signed

Type	Condo	Price	\$1,750,000	Sq. Ft.	1,367	Beds	2
DOM	-	Initial	\$1,750,000	PPSF	\$1,281	Baths	2



27-17 42nd Road, Unit 7E

Long Island City

Contract Signed

Type	Condo	Price	\$1,650,000	Sq. Ft.	1,228	Beds	2
DOM	54	Initial	\$1,690,000	PPSF	\$1,344	Baths	2

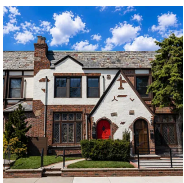


641 158th Street

Beechhurst

Contract Signed

Type	House	Price	\$1,575,000	Sq. Ft.	2,423	Beds	4
DOM	22	Initial	\$1,575,000	PPSF	\$651	Baths	2



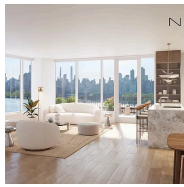
92-15 68th Avenue

Forest Hills

Contract Signed

Type	House	Price	\$1,490,000	Sq. Ft.	2,147	Beds	3
DOM	22	Initial	\$1,490,000	PPSF	\$694	Baths	2.5

Compass is a licensed real estate broker and abides by Equal Housing Opportunity laws. All material presented herein is intended for informational purposes only. Information is compiled from sources deemed reliable but is subject to errors, omissions, changes in price, condition, sale, or withdrawal without notice. No statement is made as to the accuracy of any description. All measurements and square footages are approximate. This is not intended to solicit property already listed. Nothing herein shall be construed as legal, accounting or other professional advice outside the realm of real estate brokerage.



30-55 Vernon Boulevard, Unit 6Q

Contract Signed

Astoria

Type	Condo	Price	\$1,450,000	Sq. Ft.	1,268	Beds	2
DOM	174	Initial	\$1,450,000	PPSF	\$1,144	Baths	2



174-28 Pidgeon Meadow Road

Contract Signed

Flushing

Type	House	Price	\$1,399,999	Sq. Ft.	2,192	Beds	3
DOM	19	Initial	\$1,399,999	PPSF	\$639	Baths	3

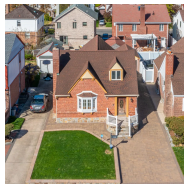


241-11 52nd Avenue

Contract Signed

Douglaston

Type	House	Price	\$1,398,888	Sq. Ft.	1,857	Beds	4
DOM	24	Initial	\$1,398,888	PPSF	\$754	Baths	3

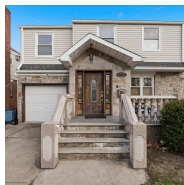


75-20 180th Street

Contract Signed

Utopia

Type	House	Price	\$1,388,000	Sq. Ft.	1,701	Beds	3
DOM	19	Initial	\$1,388,000	PPSF	\$816	Baths	3

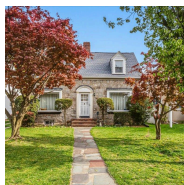


47-23 164th Street

Contract Signed

Flushing

Type	House	Price	\$1,350,000	Sq. Ft.	2,200	Beds	5
DOM	155	Initial	\$1,498,000	PPSF	\$614	Baths	3



214-08 33rd Avenue

Contract Signed

Bayside

Type	House	Price	\$1,299,888	Sq. Ft.	1,520	Beds	3
DOM	20	Initial	\$1,299,888	PPSF	\$856	Baths	1

Compass is a licensed real estate broker and abides by Equal Housing Opportunity laws. All material presented herein is intended for informational purposes only. Information is compiled from sources deemed reliable but is subject to errors, omissions, changes in price, condition, sale, or withdrawal without notice. No statement is made as to the accuracy of any description. All measurements and square footages are approximate. This is not intended to solicit property already listed. Nothing herein shall be construed as legal, accounting or other professional advice outside the realm of real estate brokerage.

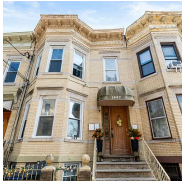


237 Beach 119th Street

Rockaway Park

Contract Signed

Type	House	Price	\$1,295,000	Sq. Ft.	2,308	Beds	4
DOM	24	Initial	\$1,295,000	PPSF	\$562	Baths	4.5



1842 Norman St

Ridgewood

Contract Signed

Type	House	Price	\$1,275,000	Sq. Ft.	2,865	Beds	5
DOM	33	Initial	\$1,275,000	PPSF	\$446	Baths	2.5



2643 211th Street

Bayside

Contract Signed

Type	House	Price	\$1,260,000	Sq. Ft.	1,118	Beds	3
DOM	37	Initial	\$1,260,000	PPSF	\$1,128	Baths	2



48-11 37th Street

Sunnyside

Contract Signed

Type	House	Price	\$1,250,000	Sq. Ft.	2,718	Beds	4
DOM	25	Initial	\$1,250,000	PPSF	\$460	Baths	3.5



162-12 88th Street

Rockwood Park

Contract Signed

Type	House	Price	\$1,250,000	Sq. Ft.	2,995	Beds	5
DOM	21	Initial	\$1,250,000	PPSF	\$418	Baths	3

Compass is a licensed real estate broker and abides by Equal Housing Opportunity laws. All material presented herein is intended for informational purposes only. Information is compiled from sources deemed reliable but is subject to errors, omissions, changes in price, condition, sale, or withdrawal without notice. No statement is made as to the accuracy of any description. All measurements and square footages are approximate. This is not intended to solicit property already listed. Nothing herein shall be construed as legal, accounting or other professional advice outside the realm of real estate brokerage.